



BUSH BARN ART CENTER AND SALEM MULTICULTURAL INSTITUTE CALL TO ARTISTS

WINTER LIGHT

Salem Art Association, in collaboration with Salem Multicultural Institute, is excited to announce a call to artists for our collaborative November and December exhibition, **Winter Light**, to be held in the Bush Barn Art Center and the Multicultural Institute Gallery.

THEME – Winter Light

In the dark and gloomy days of winter, light plays an important role in lifting the spirits and brightening lives around the world. To counteract the darkness of winter, many cultures hold festivals of light.

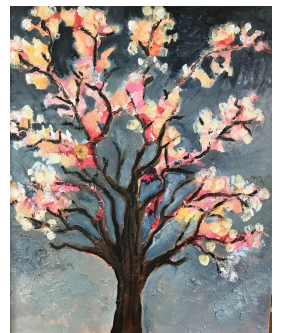
There are many people of different cultures – indigenous, Pacific Islanders, the Jewish community, and various Asian communities to name but a few – living together in the Willamette Valley who celebrate Winter in their own beautiful, unique way. We encourage artists from all cultures and communities to create something for this show so that we may come together and enjoy the many different ways our cultures celebrate **Winter Light**.

We invite regional artists working in all mediums to apply. SAA and the Salem Multicultural Institute are committed to equity and inclusion, and we welcome and encourage people of all races, ethnicities, abilities, and gender identities to apply for the show as well as visit our galleries.

This is a juried show and submissions should be received by 5 p.m. on Friday, October 7, 2022.

SUBMISSION GUIDELINES

- 2D work should be no larger than 48" x 48", wired and ready to hang.
- 3D work should not exceed 48" in any direction and should weigh less than 30lbs.
- There is no submission fee. Up to 4 images may be submitted.
- Submissions should be accompanied by an artist statement, artist bio and any information relevant to the images.
- Images should be formatted as 72dpi, a JPG or a PNG.
- Files may not exceed 1 GB. Images must be at least 8 inches on the tallest or widest proportion.
- Images should be saved with the **artist's First and Last name_name of the work**.



Please email submissions to galleries@saalemart.org

By 5 p.m. on Friday, October 7, 2022

Any questions about the exhibition should be sent to galleries@saalemart.org.

